



**ADMINISTRATIVE OFFICE**



**ADMINISTRATIVE OFFICE**



**BSW I- ROOM NO -3**



**BSW II- ROOM -4**



**CLASSROOM- ROOM-3**



**BSW III –ROOM- 5**



**CLASSROOM**



**OFFICE**

- RESEARCH AND TRAINING CENTRE
- DISTANCE AND LEARNING CENTER



## SPORTS AND N.S.S. UNIT

## 2 TOILET BLOCK





TOILETS



SPORTS ROOM



**COMPUTER LAB**



**CANTEEN**



**RAMAI POLI BHAJI CENTRE**



**BOYS HOSTEL**



**WATER TANK**



**WATER TANK**

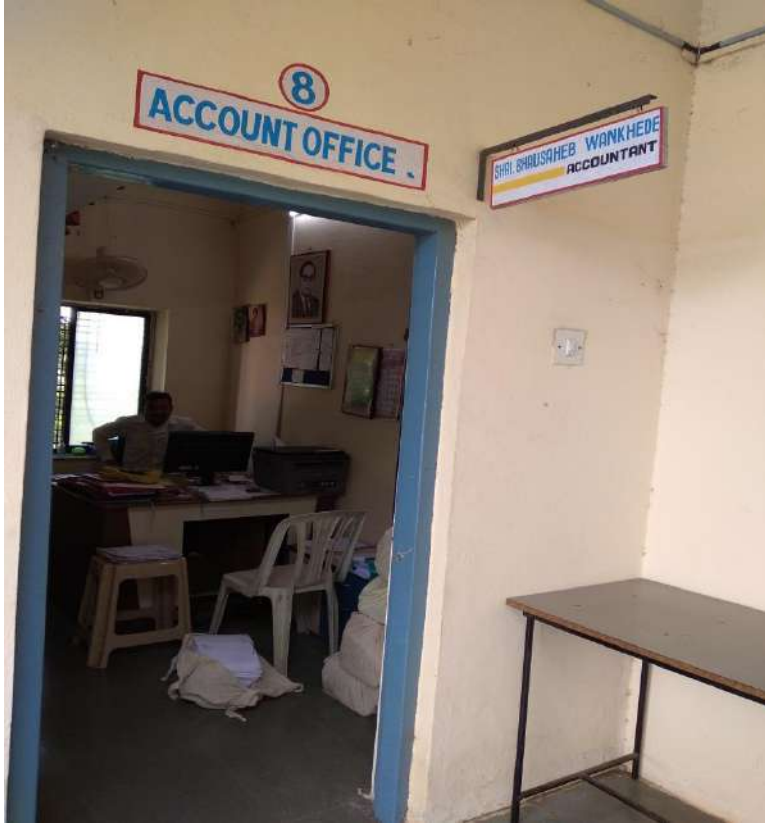




**STORE ROOM**



**LADIES TOILET**



**ACCOUNT OFFICE**



**MSW I- CLASS ROOM- 9**



**MSW II- CLASSROOM -10**





**SOLAR WIND ENERGY STORE**



**SEMINAR HALL**



**COUNSELLING  
CENTRE**





**SOME FACULTIES FOR CABIN**



**STAFF ROOM/ CABIN**







**CABIN**





**SC. ST.CELL**



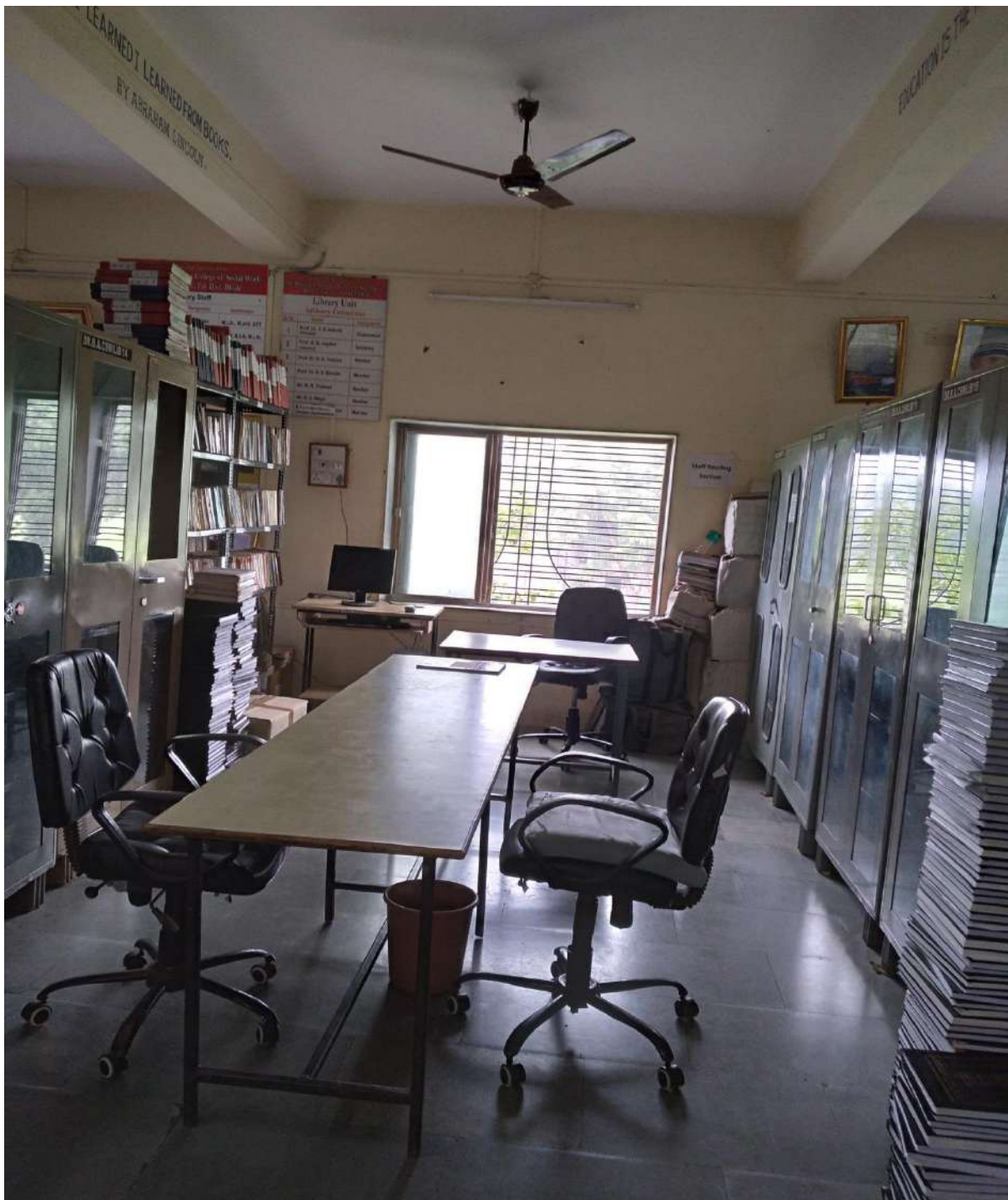
**SEMINAR HALL**



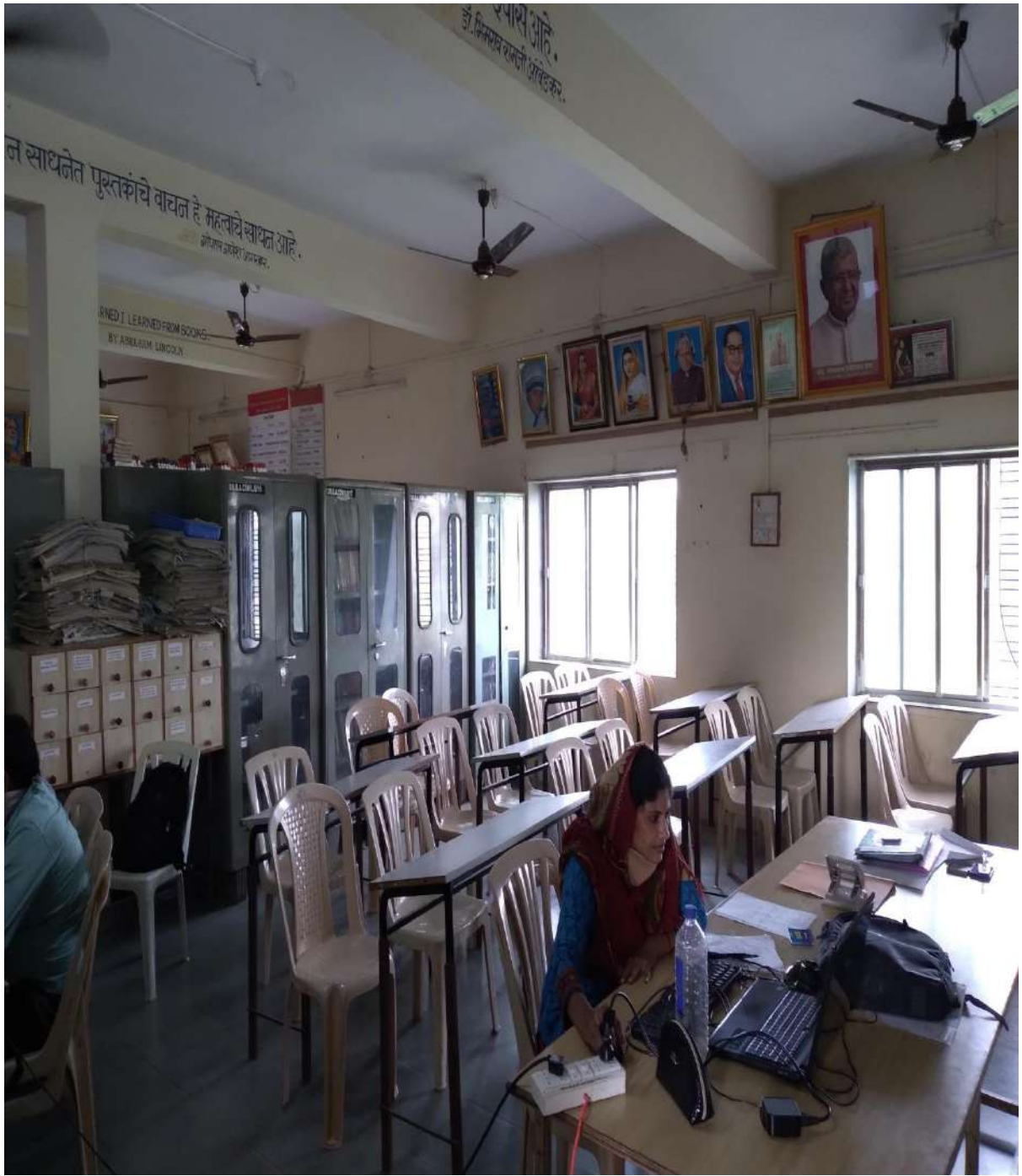
**PASSAGE- II FLOOR**



**PASSAGE III FLOOR**



**FACULTY CORNER IN LIBRARY**



**READING ROOM IN LIBRARY**



**Ladies Staff Room**





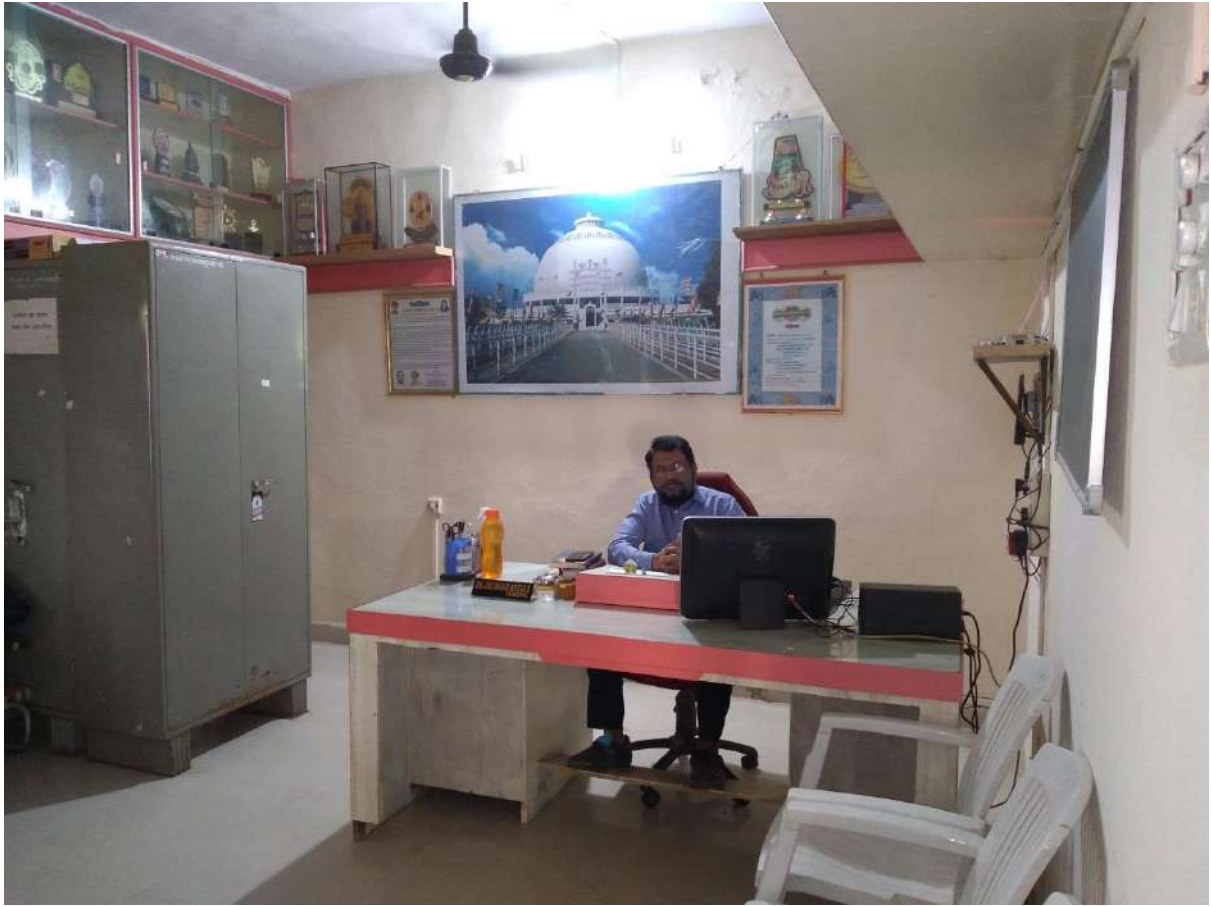
**Solar plant**







**GROUND**



**Hon. PRINCIPAL**



**COLLEGE GARDEN**



**DR.BABASAHEB AMBEDKAR COLLEGE OF SOCIAL WORK.MORANE DHULE**